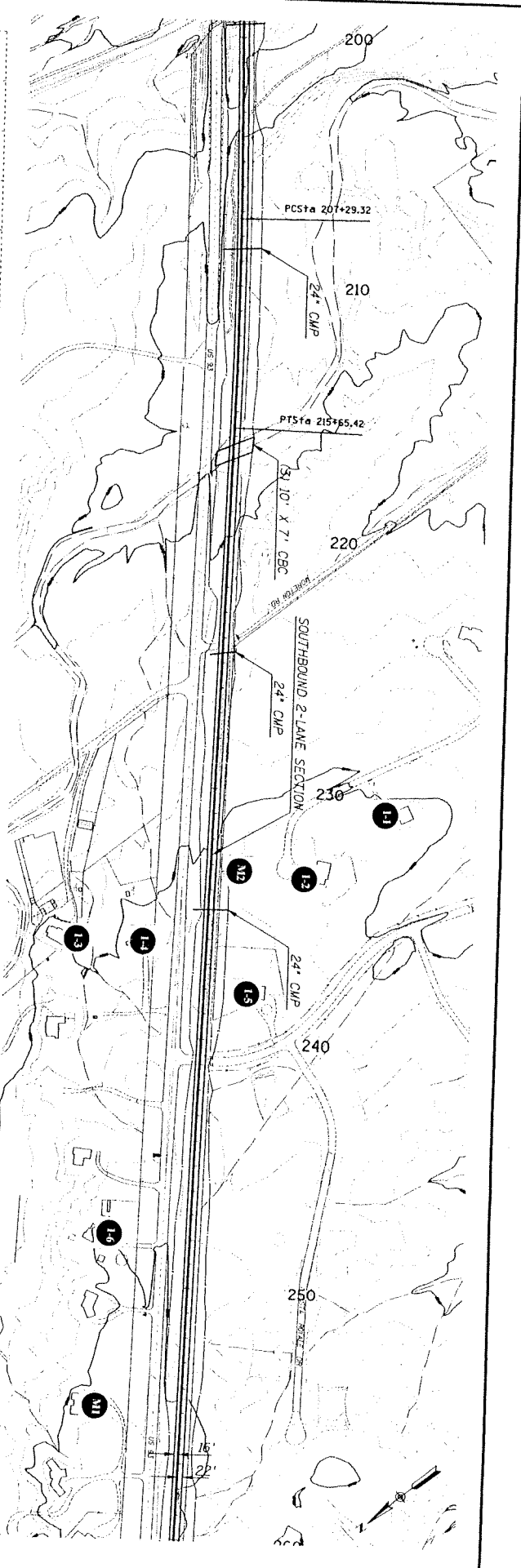
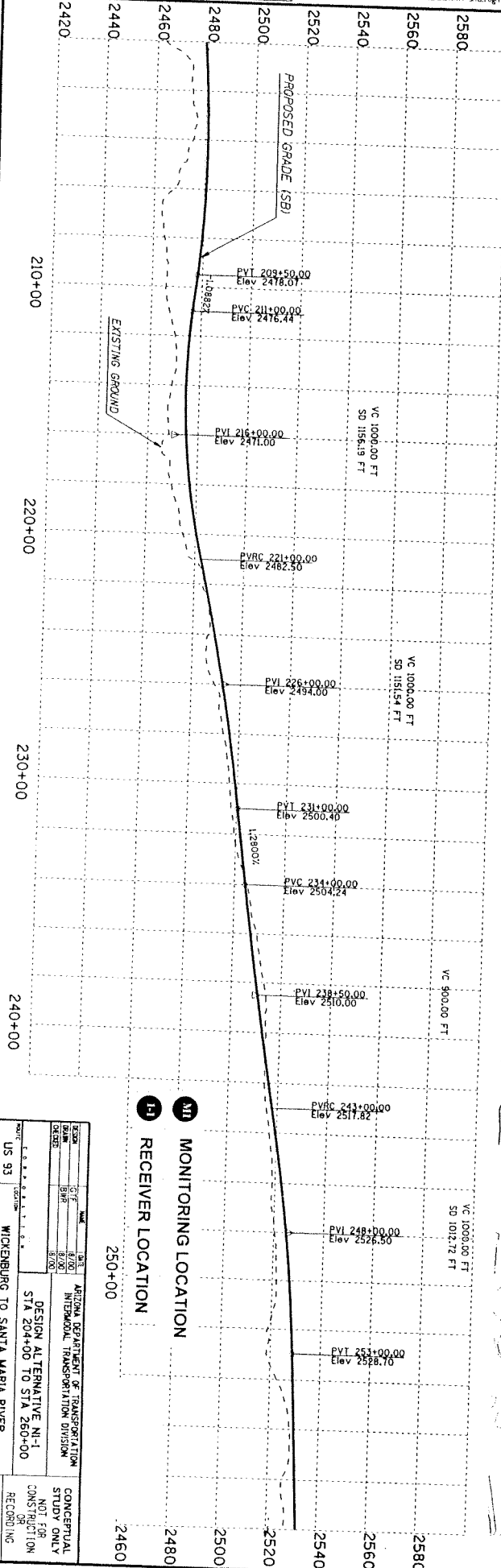


## Appendix G – Noise Analysis Information

To determine existing noise conditions, ambient noise level readings were taken at two locations in the project area in January 2002. Noise levels were monitored during mid-day (12:30 to 1:30 pm) traffic conditions using a Larson Davis Model 820 Type I integrating sound level meter placed approximately 5 ft above the ground.

Site M-1, located at MP 191.8 approximately 230 ft east of the R/W line, had a measured noise level of 57 dBA. Site M-2, located at MP 192.2 approximately 200 ft west of the R/W line, had a measured noise level of 58 dBA.

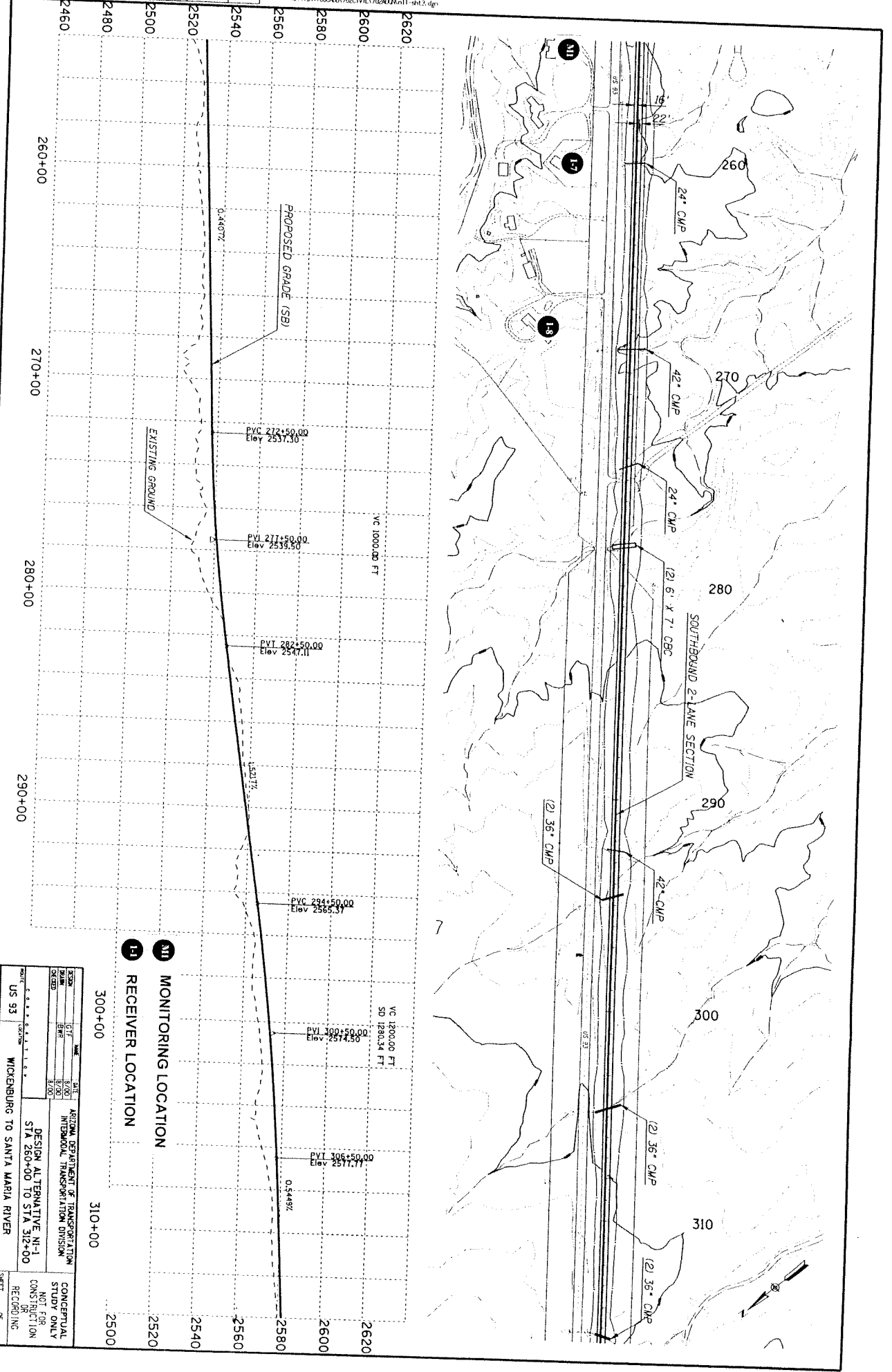
SHEET NO.	FIGURED PLANS	REVISIONS	LOCATION	DATE



NO. 93	WICKENBURG TO SANTA MARIA RIVER	DESIGN ALTERNATIVE N-1 STA 204+00 TO STA 260+00	CONCEPTUAL STUDY ONLY NOT FOR CONSTRUCTION RECORDING
TRACS NO. H 4871 01 L			SHEET OF

**M1** MONITORING LOCATION  
**R1** RECEIVER LOCATION

SHEET NO.	FINISHED PLANS	REVISIONS	LOCATION	DATE



DESIGN	DATE	SCALE	PROJECT
BY	DATE	SCALE	PROJECT
CHECKED	DATE	SCALE	PROJECT
DATE	DATE	SCALE	PROJECT

ARIZONA DEPARTMENT OF TRANSPORTATION  
 INTERMODAL TRANSPORTATION DIVISION

DESIGN ALTERNATIVE M-1  
 STA 260+00 TO STA 312+00

US 93 WICKENBURG TO SANTA MARIA RIVER

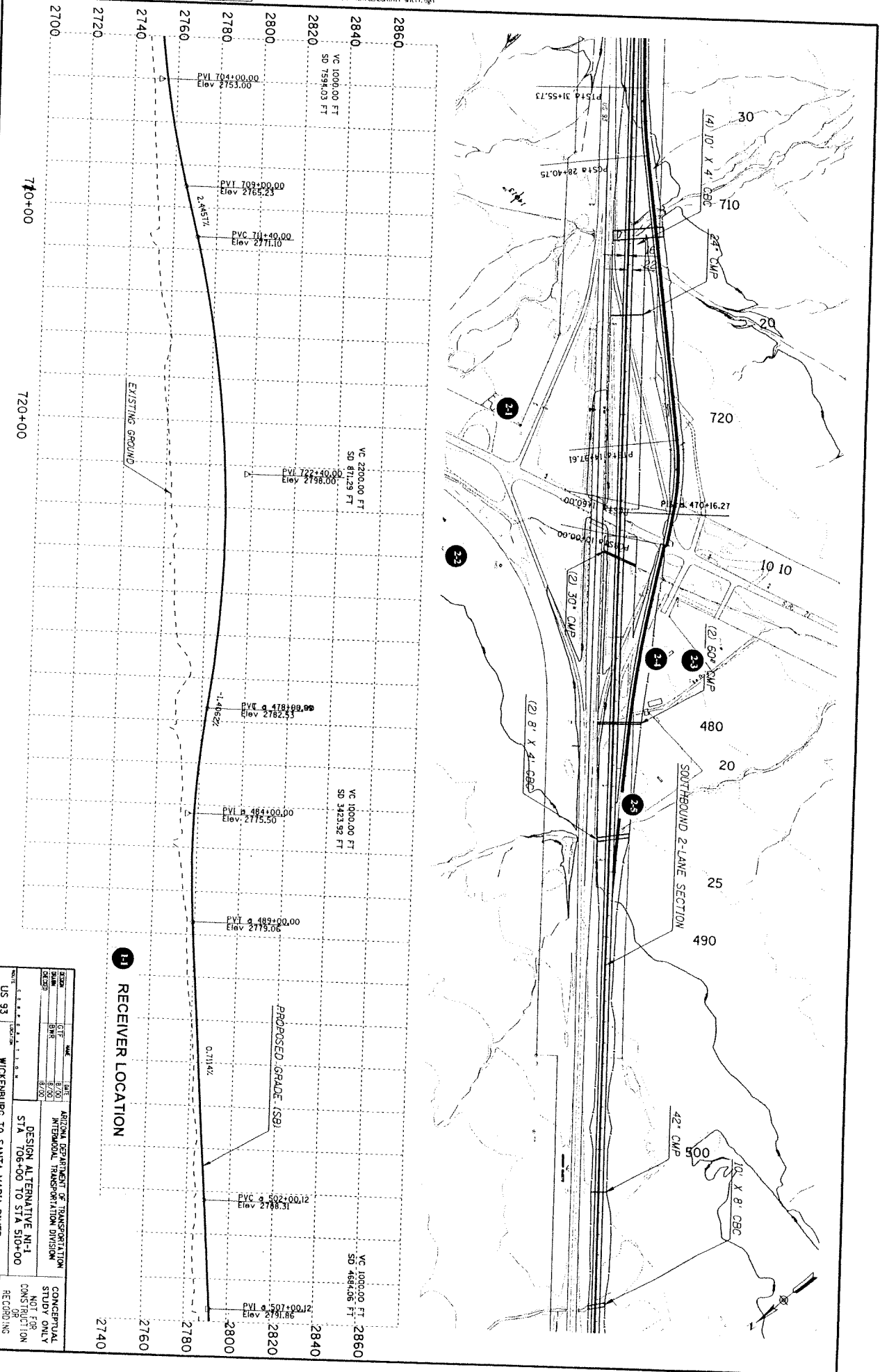
TRACS NO. H 4871 01 L

CONCEPTUAL STUDY ONLY  
 NOT FOR CONSTRUCTION RECORDING

SHEET 0F

SHEET NO.	FINISHED PLAN	REVISIONS	LOCATION	DATE

Plotted By Roche Date: 11 NOV 2001 11:38  
 File: P:\014164\700\ADD\700\WVLA\AD\ADD\011.dwg



DESIGN	DATE	BY	CHK	APP	DATE	BY	CHK	APP
8/20/01	8/20/01				8/20/01			

ARIZONA DEPARTMENT OF TRANSPORTATION  
 INTERMODAL TRANSPORTATION DIVISION

DESIGN ALTERNATIVE M-1  
 STA 706+00 TO STA 510+00

US 93 WICKENBURG TO SANTA MARIA RIVER

CONCEPTUAL STUDY ONLY  
 NOT FOR CONSTRUCTION RECORDING

SHEET 0F